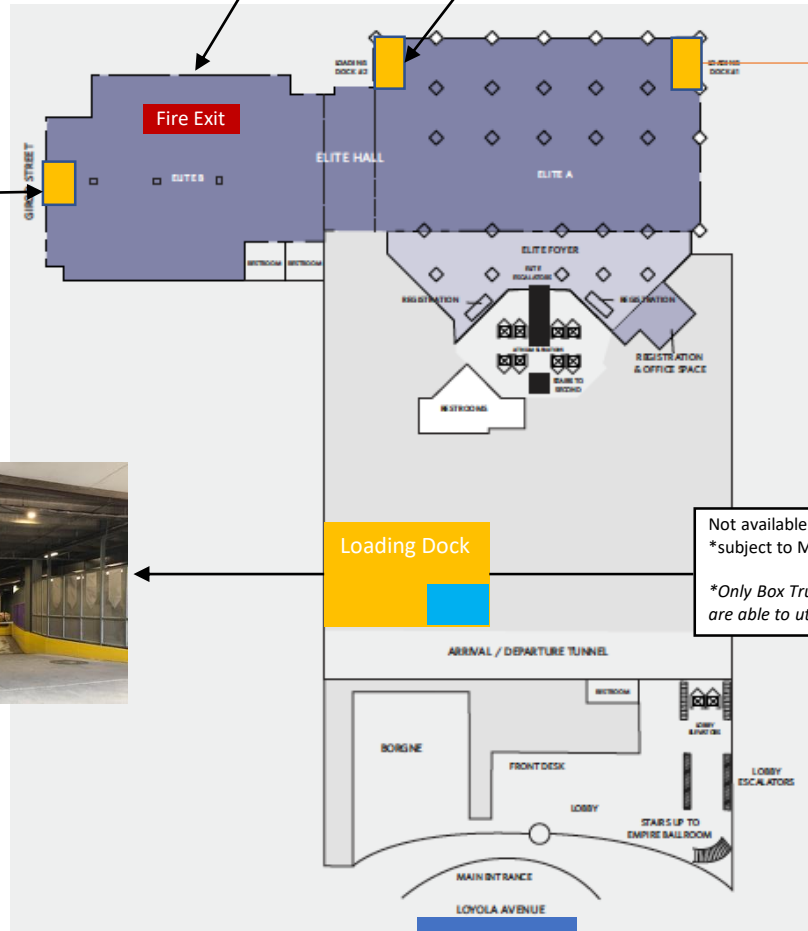
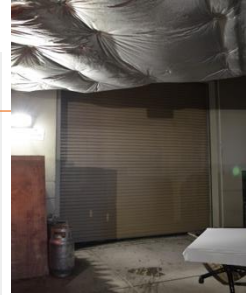


ELITE LOAD IN/OUT

*info on fork lift rental available upon request



(2ft)



Not available Mon-Fri 6AM - 2PM
 *subject to Managers approval
 *Only Box Trucks 26ft and smaller are able to utilize The Loading Dock

Notes/Requirements

- There is only ground level access into Elite Hall
- A Forklift/lift gate/ramp is required
- Trucks cannot be double stacked
- If any sidewalk is blocked, a permit must be obtained from the City of New Orleans

Ground Unloading Specs:

Elite A Load In/Out
 Two Roll Up Doors
 Door sizes: 12' x12'
 Note:* Items being loaded can't be over 8' because of one low air duct

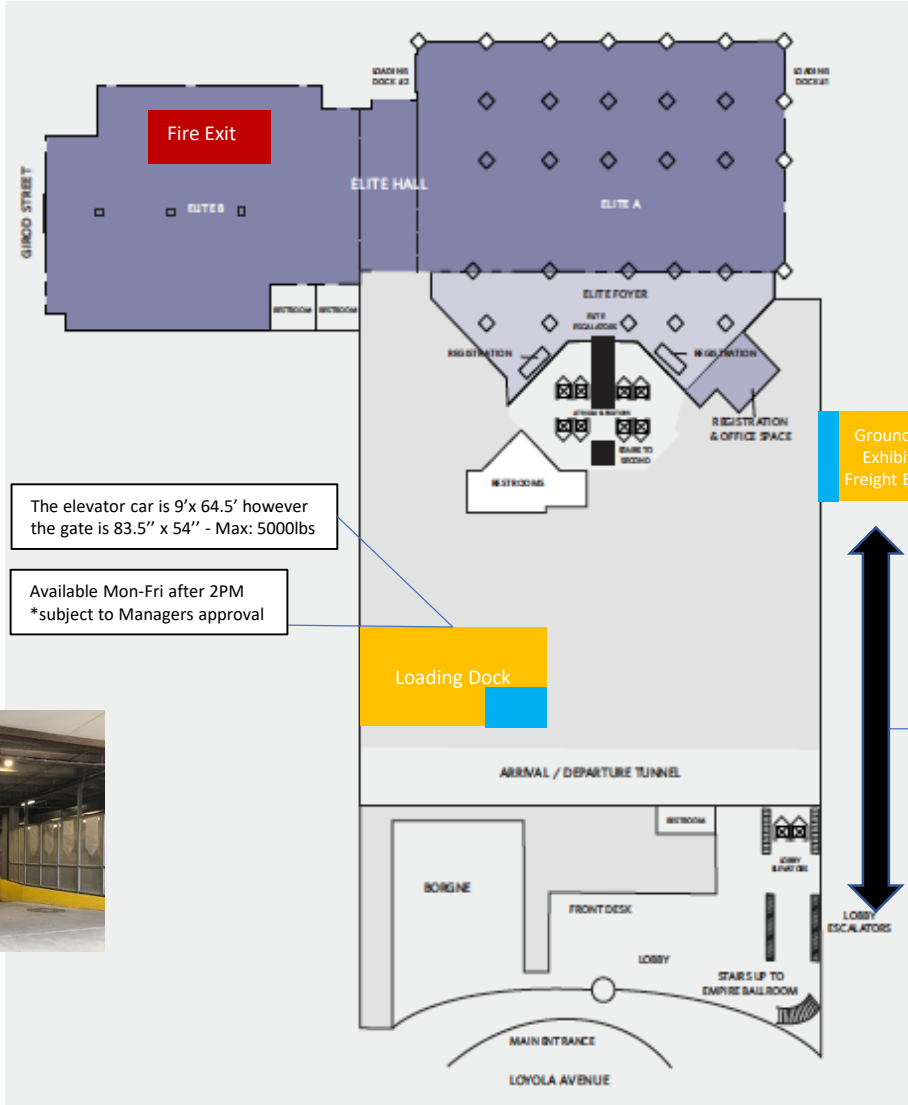
Elite B Load In/Out
 One Roll Up Door
 Door sizes: 12' x12'
 Note:* 2 ft step into space

Key

- Loading Docks
- Fire Exit
- Small Freight Elevator

EMPIRE | CELESTIN | STORYVILLE LOAD IN/OUT

Girod Street



The elevator car is 9'x 64.5' however the gate is 83.5" x 54" - Max: 5000lbs

Available Mon-Fri after 2PM
*subject to Managers approval

Ground Level Exhibit Hall Freight Elevator

Loading Dock

ARRIVAL / DEPARTURE TUNNEL

BORGNE

FRONT DESK

LOBBY

STAIRS UP TO EMPIRE BALLROOM

MAIN ENTRANCE

LOYOLA AVENUE

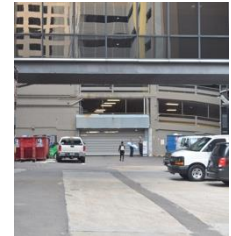


Exhibit Hall Freight

Loyola Ave

Notes/Requirements

Only one truck at a time can back in and out of **Ground Level Exhibit Hall Freight Elevator**. One additional truck can be staged at Hyatt Way, based on availability.

**If your load in/out requires more than two trucks, staggering arrival is strongly advised.*

Exhibit Hall Freight
Max Load weight 12,000lbs
19'x 11.6' x 7.10'
Front Door: 11.6' x 7.10'

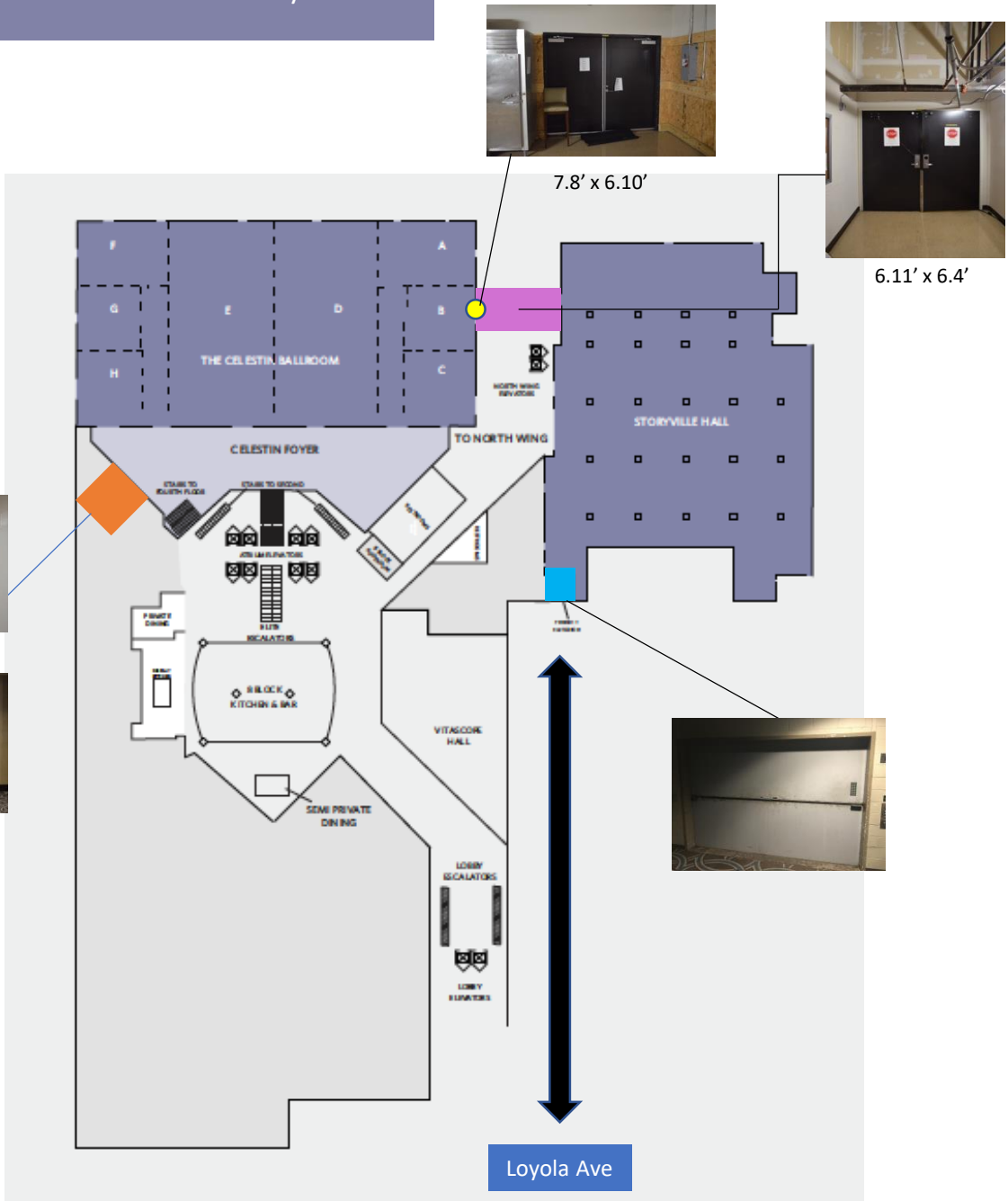
Requires Mandatory Elevator Operator: \$90hr/4hr min

Small Freight Elevator
Max: 5,000lbs
9' x 7' x 5.3'
Front Gate: 6.9' x 4.5'
Avail: Mon- Fri 2pm
*subject to Managers approval

Key

- Loading Docks
- Fire Exit
- Exhibit Hall Freight Elevator

CELESTIN | STORYVILLE LOAD IN/OUT



Notes/Requirements

- Mandatory [Freight] Elevator Operator \$90/hr Min. 4hrs
- One truck at a time can back into load in/out off of Loyola Ave.
- Freight Elevator is ground level so Forklift or Tail lift is required.

Exhibit Hall Freight

Max Load weight 12,000lbs
 19'x 11.6' x 7.10'
 Front Door: 11.6' x 7.10'

Service Elevators

Max Load weight 4,000lbs
 5.1'x7.4' x 10'
 Front Door: 4'x7'

Key

- Hallway
- Service Elevator
- Exhibit Hall Freight Elevator

